

EN | Metal wide belt sander

MAXX 4





HOUFEK

MAXX 4

Control panel featuring a digital display, a blue emergency stop button, a power switch, and various indicator lights.

EMERGENCY STOP



HOUFEK





WIDE BELT SANDER

MAXX 4

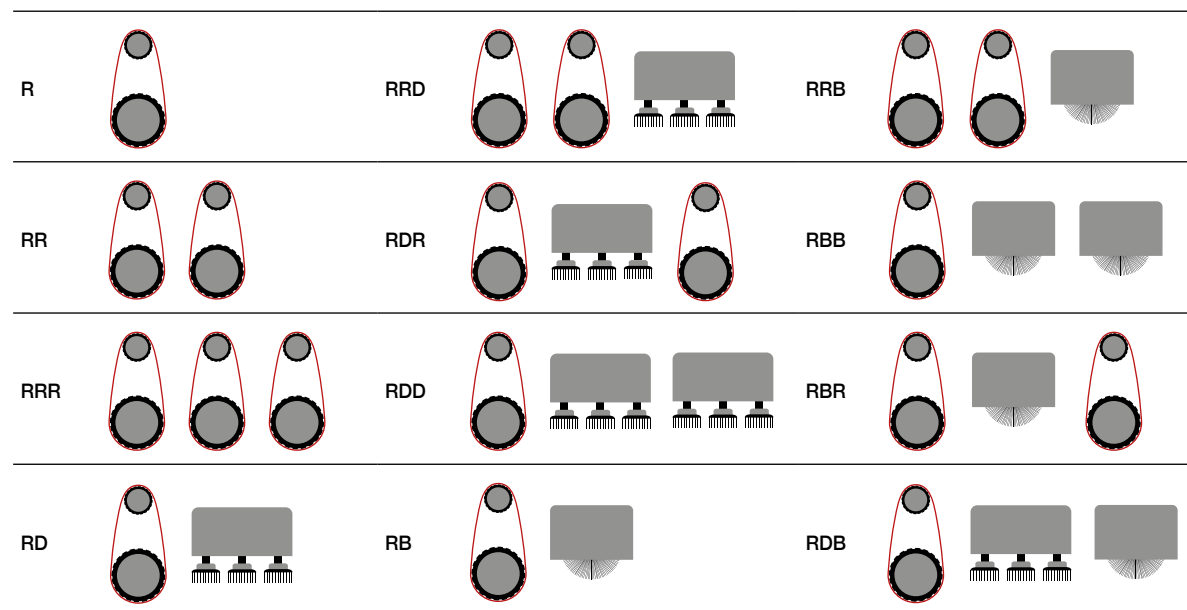
WIDE BELT SANDER
MAXX 4

TECHNICAL SPECIFICATIONS

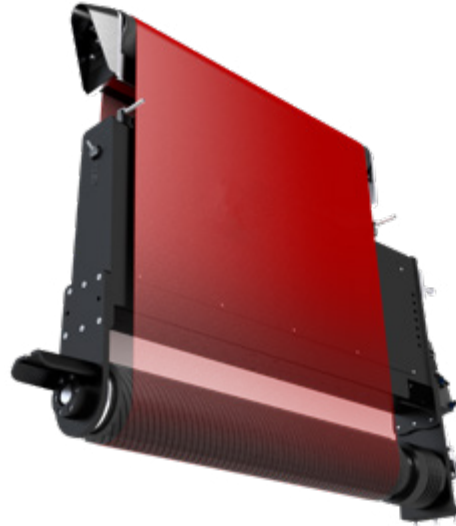
MAXX 4 WIDE BELT SANDER

| | | 400 | 800 | 1100 | 1300 |
|------------------------------------|-------|------------|------------|-------------|-------------|
| Max. working width | mm | 400 | 800 | 1100 | 1300 |
| Min./max. workpiece height | mm | 0,5 – 160 | 0,5 – 160 | 0,5 – 160 | 0,5 – 160 |
| Feed belt motor frequency inverter | m/min | 2 – 10 | 2 – 10 | 2 – 10 | 2 – 10 |
| Motor – unit R | kW | 7,5 | 11 | 11 | 11 |
| Motor – unit D | kW | 1,5 | 1,5 | 1,5 | 2,2 |
| Motor – unit B | kW | 7,5 | 7,5 | 11 | 11 |
| Sanding belt (L x W) | mm | 1900 x 430 | 1900 x 830 | 1900 x 1120 | 1900 x 1330 |
| Contact roller diameter | mm | 120 | 120 | 120 | 120 |
| Speed of unit R | m/s | 18 | 18 | 18 | 18 |
| Speed of unit D, B | rpm | 2000 | 2000 | 2000 | 2000 |
| Weight | kg | 850 – 4800 | | | |

UNIT CONFIGURATION



UNIT R



Standard equipment

- Rubbered roller Ø 120 mm, 60Sh
- Sanding belt speed 18m/s
- Sanding belt dimension 430 x 1900 mm, 830 x 1900 mm, 1120 x 1900 mm, 1330 x 1900 mm
- Motorized table height adjustment
- Min. and max. workpiece height 0,5 - 160 mm
- Automatic star / delta switch
- Feed belt motor frequency inverter - speed 2 - 10 m/min
- Ammeter for motor of sanding unit
- Optical sensor control of abrasive belt oscillation
- Electronic measuring of table position with digital display
- Rubber pressure rollers
- Main motor pneumatic disc brake
- Pressure switch 3,5 - 4,0 bar
- Sanding belt
- CE certification

Optional equipment

- Two speed motor for table height adjustment
- Main motor frequency inverter - speed 10 - 35 m/s
- NC machine control, colour Touchscreen 10,4"
- Electronic adjustment of contact roller position by stepper motor
- Rubber roller Ø 120 mm, 30 Sh, 45 Sh, 90 Sh
- Rubber roller Ø 160 mm, 30 Sh, 45 Sh, 90 Sh
- Timed air cleaning device for sanding belt
- Automatic feed belt tracking
- Sanding belt 2200 mm
- Table lift 220 mm
- Electronical limitation of maximum material removal
- Front and rear extension table with rollers 400 mm
- Front and rear extension table with flat plate 500 mm
- Vacuum table
- Magnetic table with permanent magnet, width 150 mm, 300 mm
- Vacuum pump for width 400 mm, 800 mm, 1100 mm, 1300 mm
- Flat feeding belt
- Module for feeding belt cleaning

WIDE BELT SANDER
MAXX 4

UNIT D



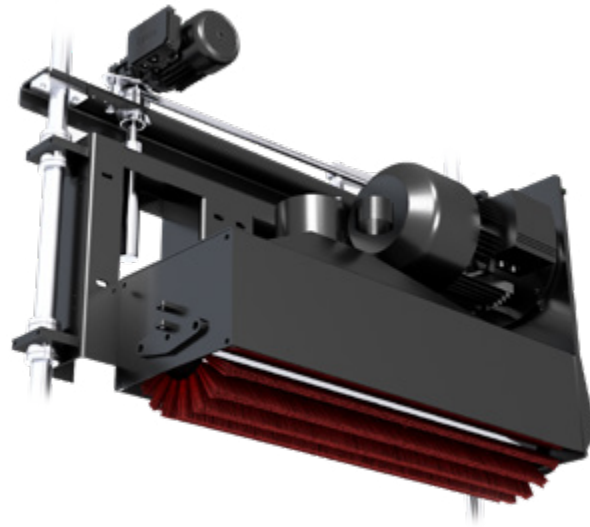
Standard equipment

- Sliding unit D with disc brush unit in two rows with oscillation
- Motorized height adjustment of disc unit D, with digital display
- Disc diameter 115 mm, width 400 mm - 5 pcs, 800 mm - 9 pcs, 1100 mm - 11 pcs, 1300 mm - 15 pcs
- Motorized table height adjustment
- Min. and max. workpiece height 0,5 - 160 mm
- Automatic star / delta switch
- Ammeter for motor of sanding unit
- Electronic measuring of table position with digital display
- Rubber pressure rollers
- Main motor pneumatic disc brake
- Pressure switch 3,5 - 4,0 bar
- CE certification

Optional equipment

- Two speed motor for table height adjustment
- Main motor frequency inverter - speed 10 - 35 m/s
- Variable speed of discs, 1500 - 2500 RPM
- NC machine control, colour Touchscreen 10,4"
- Automatic feed belt tracking
- Table lift 220 mm
- Electronical limitation of maximum material removal
- Front and rear extension table with rollers 400 mm
- Front and rear extension table with flat plate 500 mm
- Vacuum table
- Magnetic table with permanent magnet, width 150 mm, 300 mm
- Vacuum pump for width 400, 800, 1100, 1300 mm
- Flat feeding belt
- Module for feeding belt cleaning

UNIT B



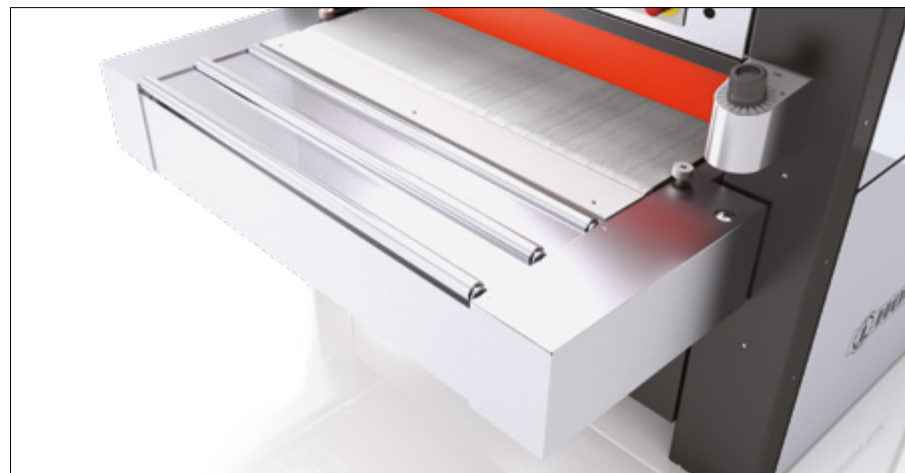
Standard equipment

- Motorized height adjustment of brush unit B, with digital display
- Min. and max. diameter of drum brush 120 - 300 mm
- Shaft diameter of drum brush unit 60 mm
- Motorized table height adjustment
- Min. and max. workpiece height 0,5 - 160 mm
- Automatic star / delta switch
- Feed belt motor frequency inverter - speed 2 - 10 m/min
- Ammeter for motor of sanding unit
- Electronic measuring of table position with digital display
- Rubber pressure rollers
- Main motor pneumatic disc brake
- Pressure switch 3,5 - 4,0 bar
- CE certification

Optional equipment

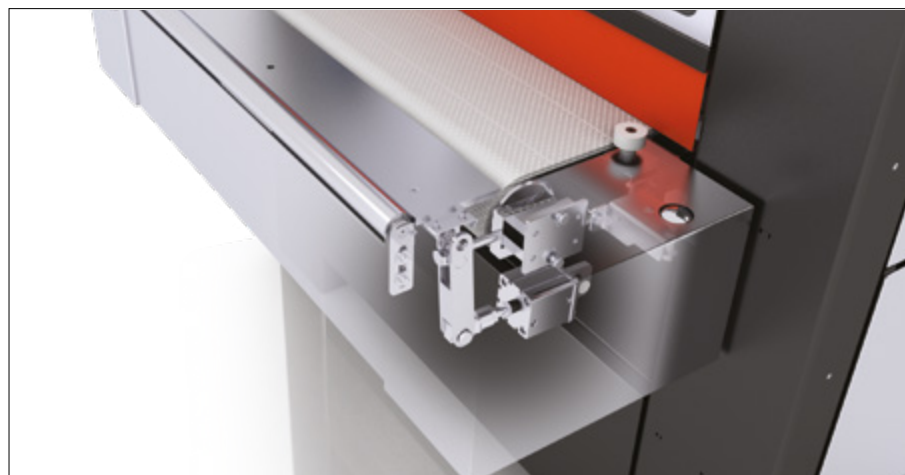
- Two speed motor for table height adjustment
- Main motor frequency inverter - speed 10 - 35 m/s
- Brushing unit oscillation with switch OFF possibility
- NC machine control, colour Touchscreen 10,4"
- Reverse run for drum brush
- Table lift 220 mm
- Automatic feed belt tracking
- Electronical limitation of maximum material removal
- Front and rear extension table with rollers 400 mm
- Front and rear extension table with flat plate 500 mm
- Vacuum table
- Magnetic table with permanent magnet, width 150 mm, 300 mm
- Vacuum pump for width 400mm, 800 mm, 1100 mm, 300 mm
- Flat feeding belt
- Module for feeding belt cleaning

WIDE BELT SANDER
MAXX 4



[O] TABLE EXTENSION WITH ROLLERS

- For long workpiece sanding



[O] FEEDING BELT CENTERING

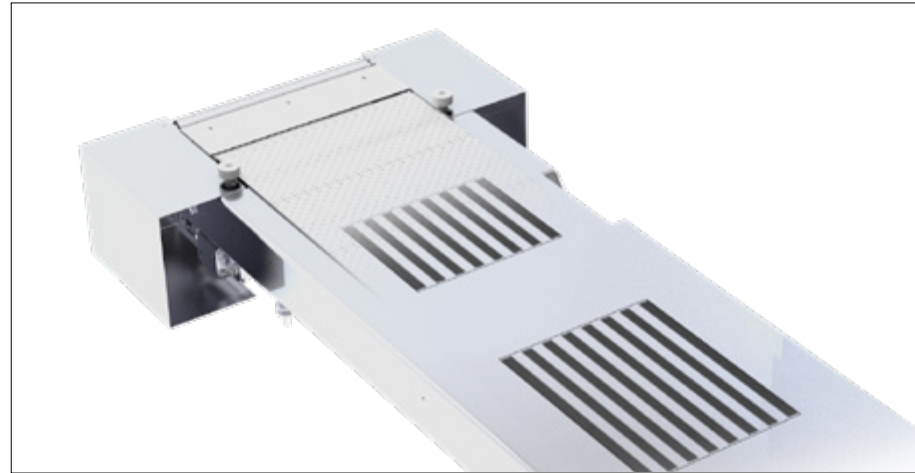
- For automatic feed belt tracking

STANDARD AND OPTIONAL EQUIPMENT



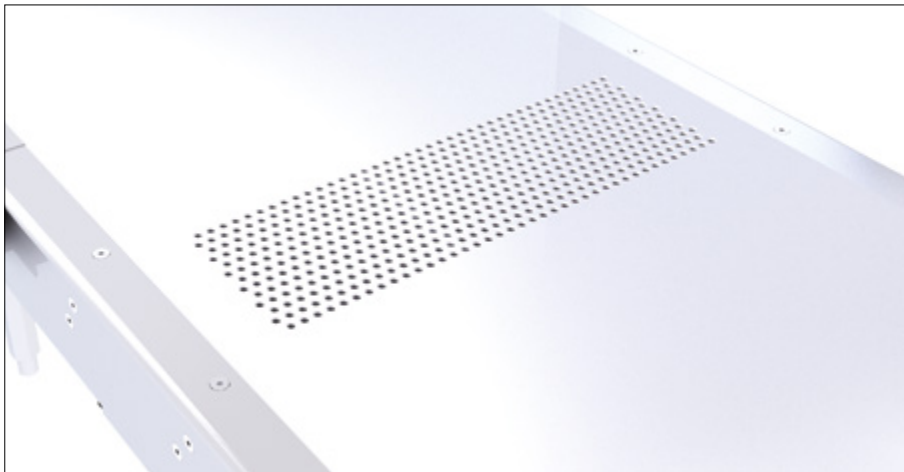
[O] NC OPERATING

- Comfort of machine working
- Program saving
- Error message



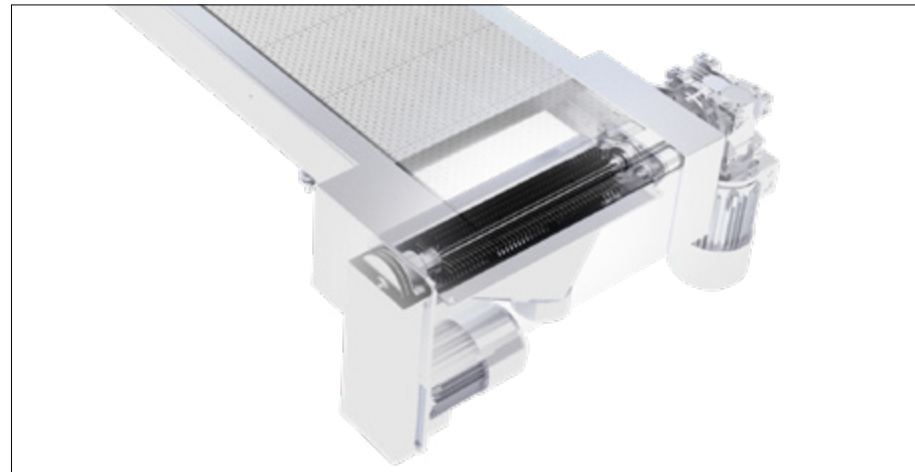
[O] MAGNETIC TABLE

- Sanding of magnetic materials smaller than 150x150 mm



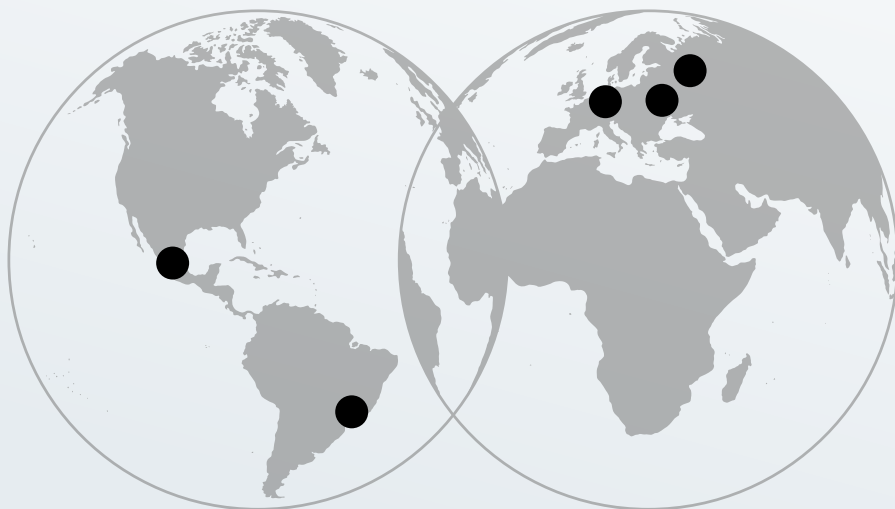
[O] VACUU TABLE

- Sanding of nonmagnetic materials smaller than 150x150 mm



[O] CLEANING FEED BELT DEVICE

- Cleaning feed belt from dust and chips



 **GERMANY**

HOUFEK Woodworking Machines GmbH
Leopoldstr. 11a
95615 Marktredwitz

T: +49 9231-507 94 45
e-mail: houfek.de@houfek.com
www.holzbearbeitungsmaschinen-houfek.de

 **MEXICO**

Houfek Mexico
Calle Guanajuato 1576
44260 Colonia Mezquitan Country
Guadalajara, Jalisco.

T: +52 133 3667 2160
e-mail: ventas.servicios@simcorporacion.com
https://www.simcorporacion.com.mx/

 **RUSSIA**

OOO «HOUFEK»
ul. Kolpakova, build. 24A
141008 Mytishchi
Moscow

T: +7 495 510 11 95
e-mail: ru@houfek.com
www.houfek.msk.ru

 **UKRAINE**

LLC Houfek
Pshenichnaya st. 8, 03680 Kiev

T: +38 044 502-41-95
T: +38 044 351-88-79
T: +38 044 44-159-44
e-mail: houfek@optima.com.ua

 **BRASIL**

Houfek Brasil
Rua Miguel Gschwendtner, n°. 160
bairro Boehmerwald
89287-590 São Bento do Sul
Santa Catarina

T: 0055-47-9911-6115
e-mail: Houfek.br@houfek.com

 **POLAND**

HOUFEK Sp. z o.o.
ul. Rynek 4, 32-540 Trzebinia

T: +48 697 977 071
T: +48 663 550 002
e-mail: biuro@houfek.com.pl
www.houfek.com.pl



HOUFEK a.s.
Obora 797
582 82 Golčův Jeníkov
Czech Republic

T: +420 569 430 700
T: czech market: +420 569 430 710
T: export: +420 569 430 711
+420 569 430 712
fax: +420 569 430 715

e-mail: houfek@houfek.com
export@houfek.com
www.houfek.com



EUROPEAN UNION
European Regional Development Fund
Operational Programme Enterprise
and Innovations for Competitiveness